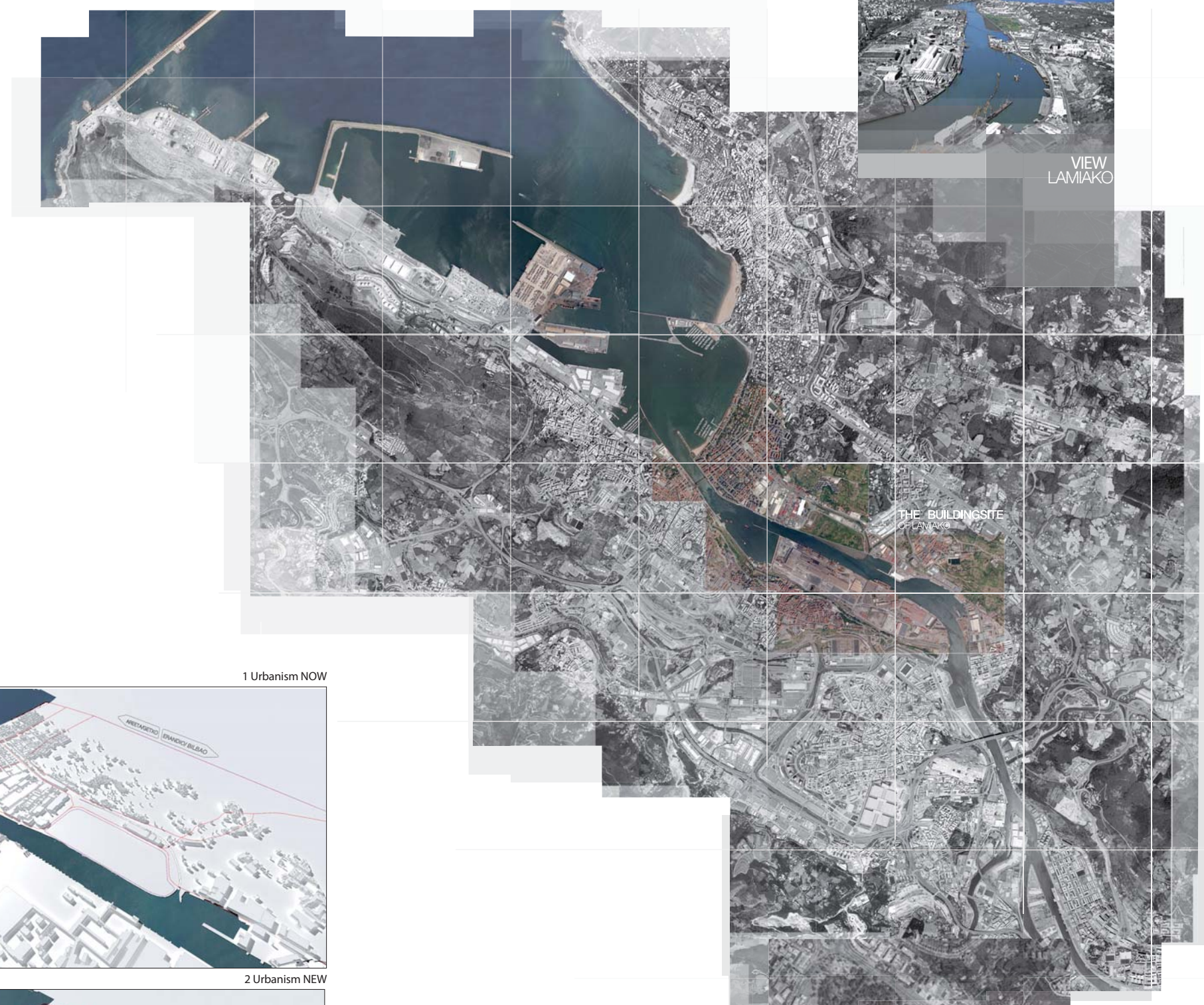


Lamiako is one of many towns positioned along the river Nervion between Bilbao and the sea. There is an empty area of around 200.000 square meters where a new part of the city should be designed. The area is surrounded by the river Nervion, a smaller river on the east, railway with landscape on the north and many small streets around the larger area. These towns have a unique character in both functions and topology.

15.01.2010  
Juan Roque Urzúa / Jürgen Mörser / Zigor Zapirain



VIEW LAMIAKO



BUILDING SITE ZOOM

**THE BUILDING SITE LAMIAKO**

Transport around this area is based on the highway about 2 kilometers from the site and on the railway with Metro de Bilbao connecting the city of Bilbao with a larger area around the city. There is also a local road along the river but this one is often exploited with the use of much larger vehicles that it was designed for. Studying the typology and transport following different types of use of buildings and spaces around the area while considering the transformation of the industry in this area we decided so somehow redesign the industrial space on the west of our site to a town similar to the surrounding towns. This act gives better perspective of how this area should look like in the future as a city formed by several independent towns connected with each other. We encouraged this town to follow the residential use of the high quality space of the river-side area with a typology similar to the Barcelona block and we were looking forward for the beer as well. The streets of this newly formed town are based

**CONCEPT FUNCTIONS - USES**

Considering of applying all of the uses inside the area we found four major points of interest around the area that either connect or effect the uses - the road on the north which we planned as a major road connecting the area to the wider surroundings, the road on the west which we planned as a minor road between our site and the new part of Las Arenas which will probably be designed in the future, the river on the south and a park we planned on the east as the positive impacts on the site.

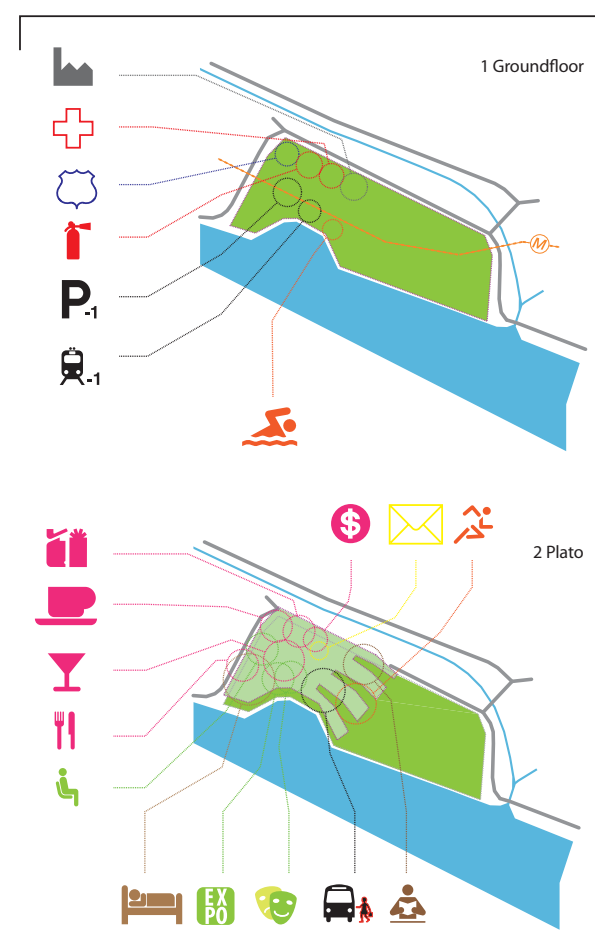
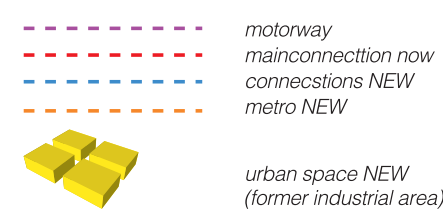
We divided the uses regarding the connection they need (more or less the question of direct connection to the road) and the position they need (more or less if the position has to be on the ground). As the site plan is completely empty and as there is no typology directly affecting our new typology and in the end because the design for our tower can be pretty much everything we started to use points for the



1 Urbanism NOW

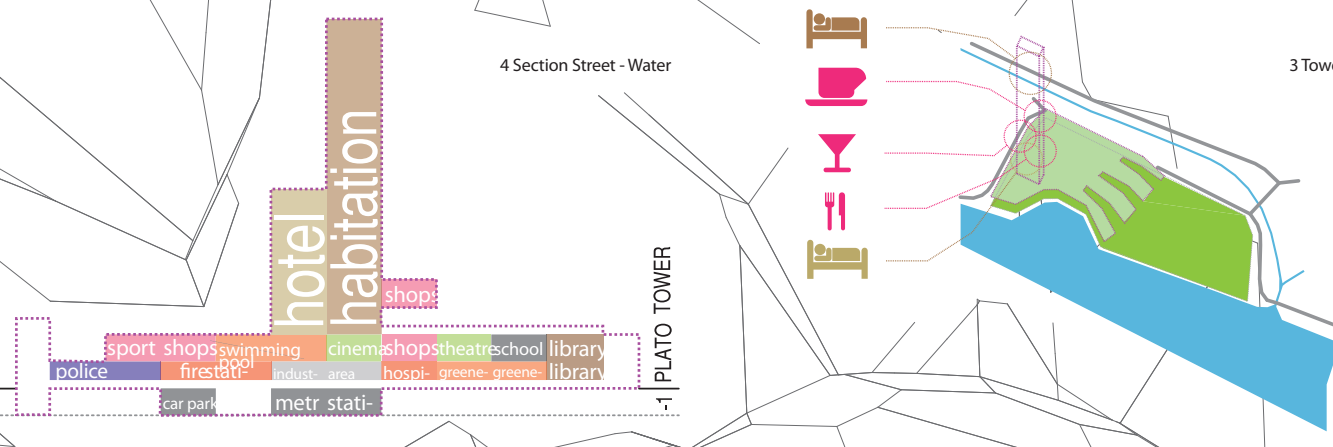


2 Urbanism NEW



1 Ground floor

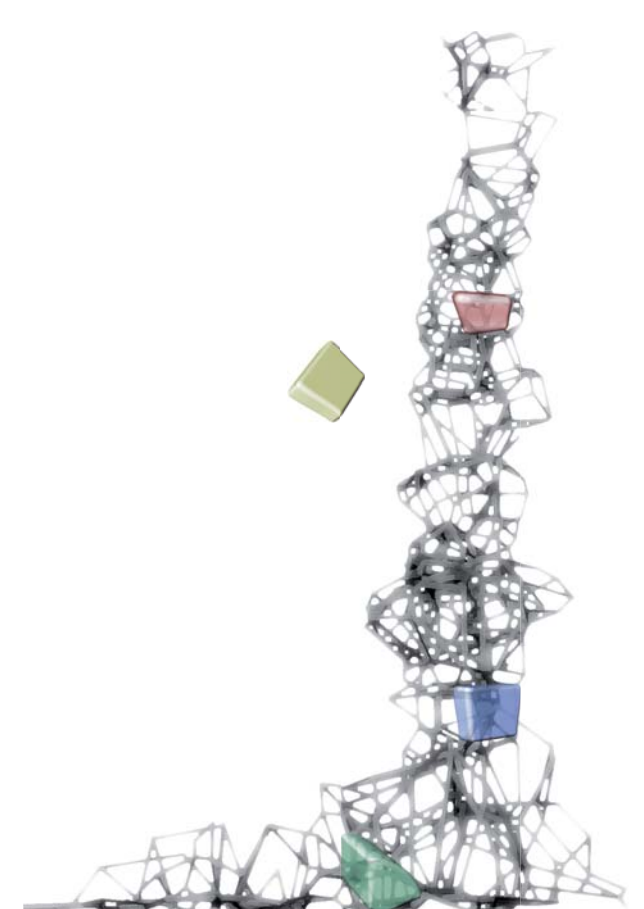
2 Plato



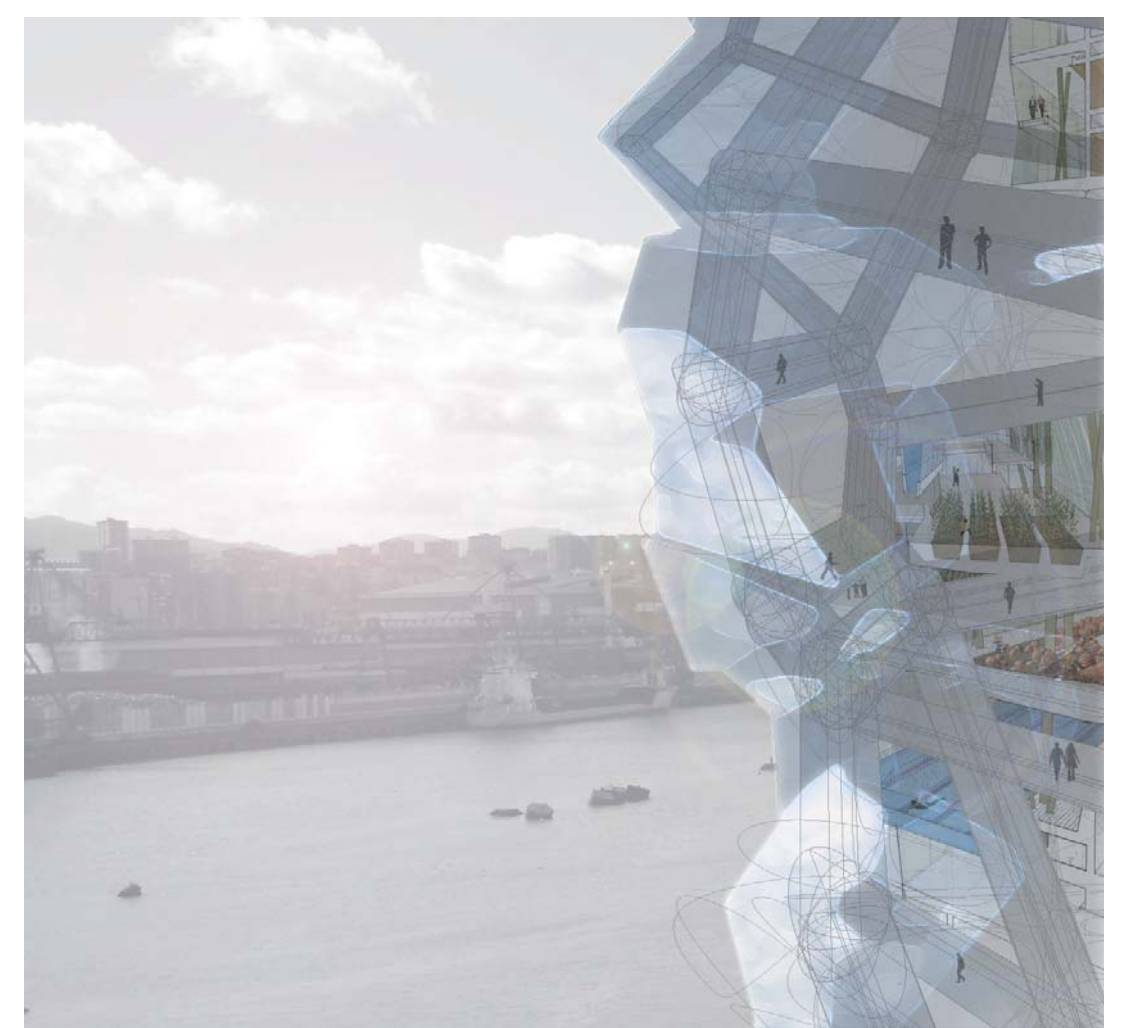
4 Section Street - Water

3 Tower

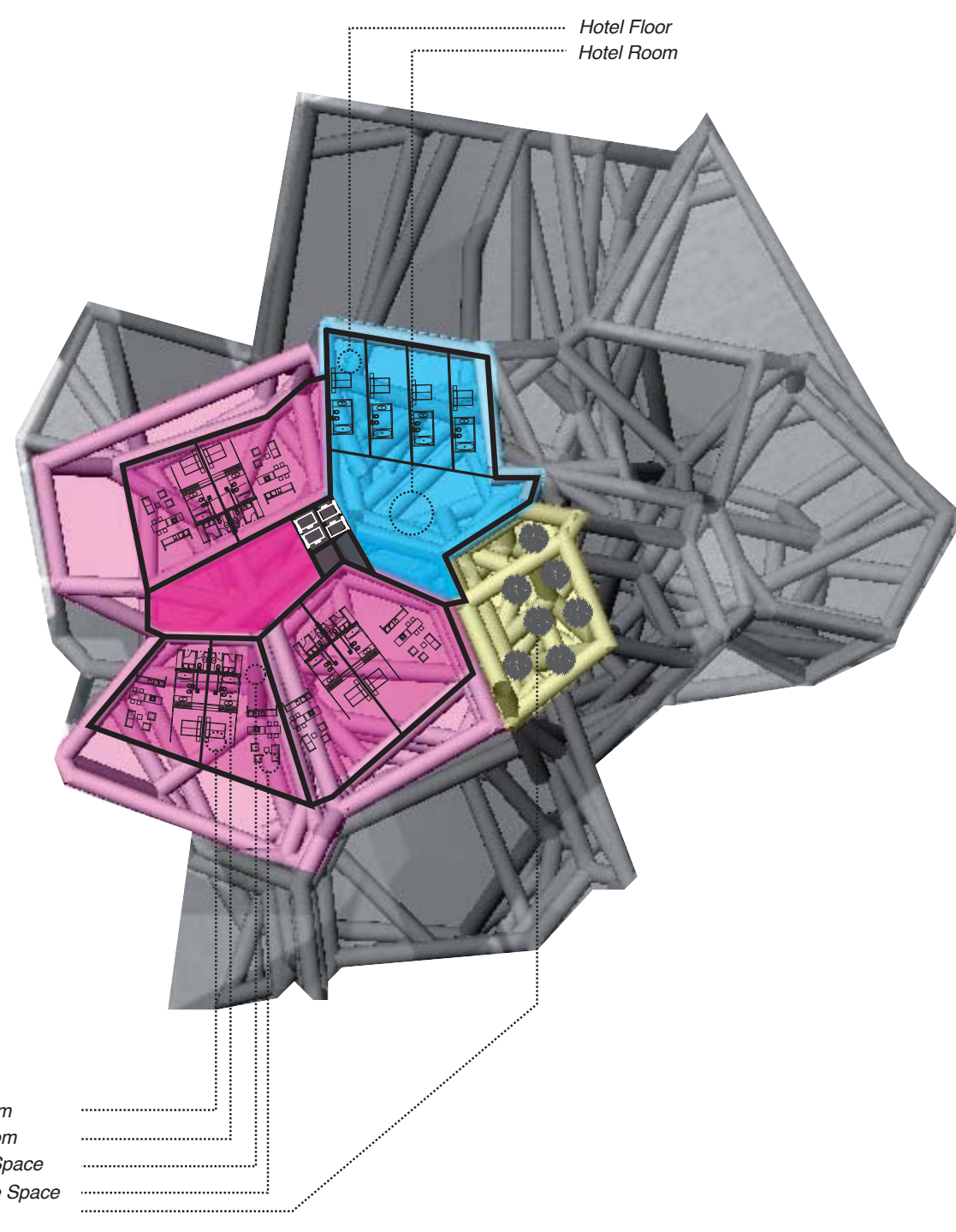
**STRUCTURE TOWER**



**TOWER VIEW TO THE RIVER**

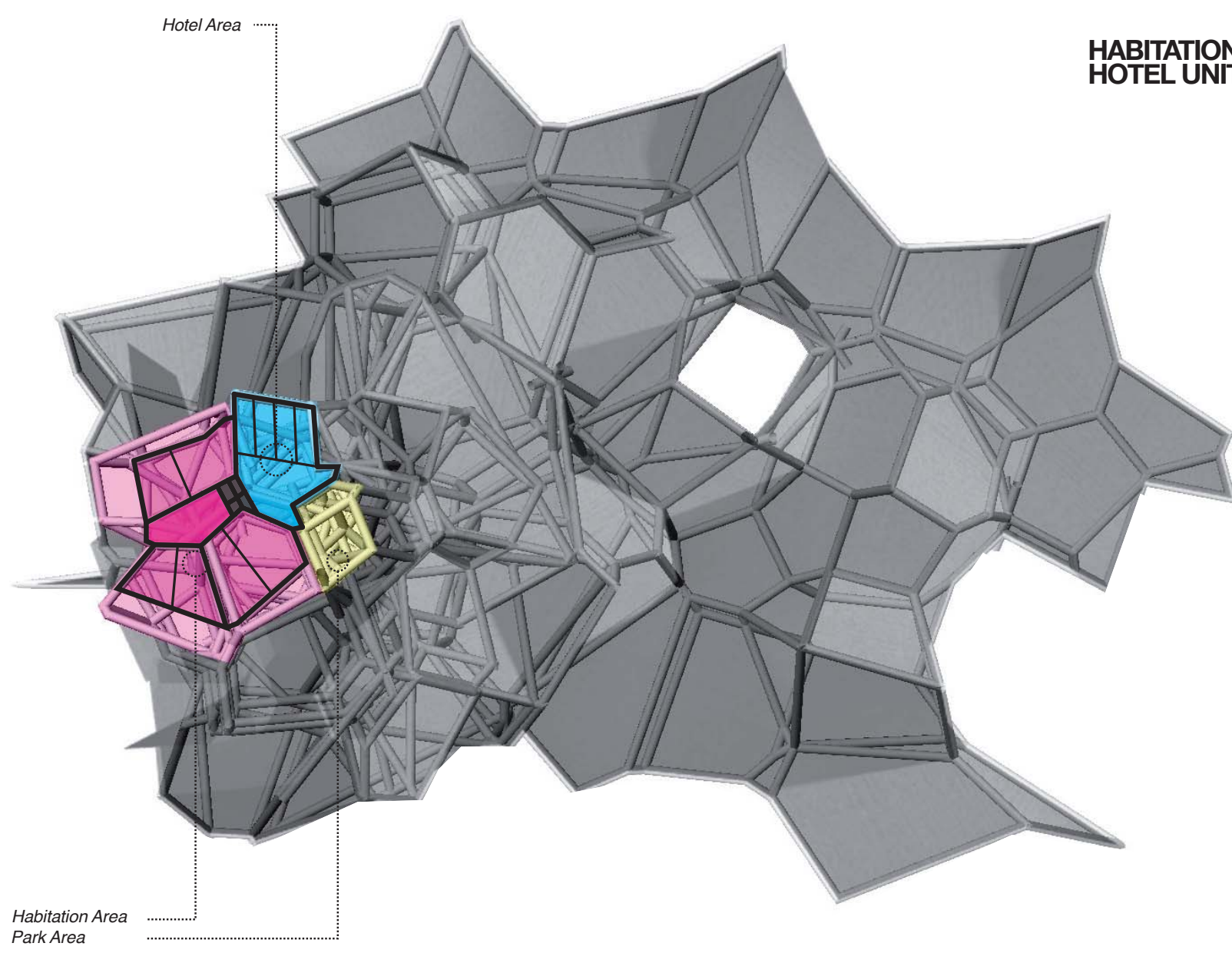


**HABITATION & HOTEL UNIT DETAILED**



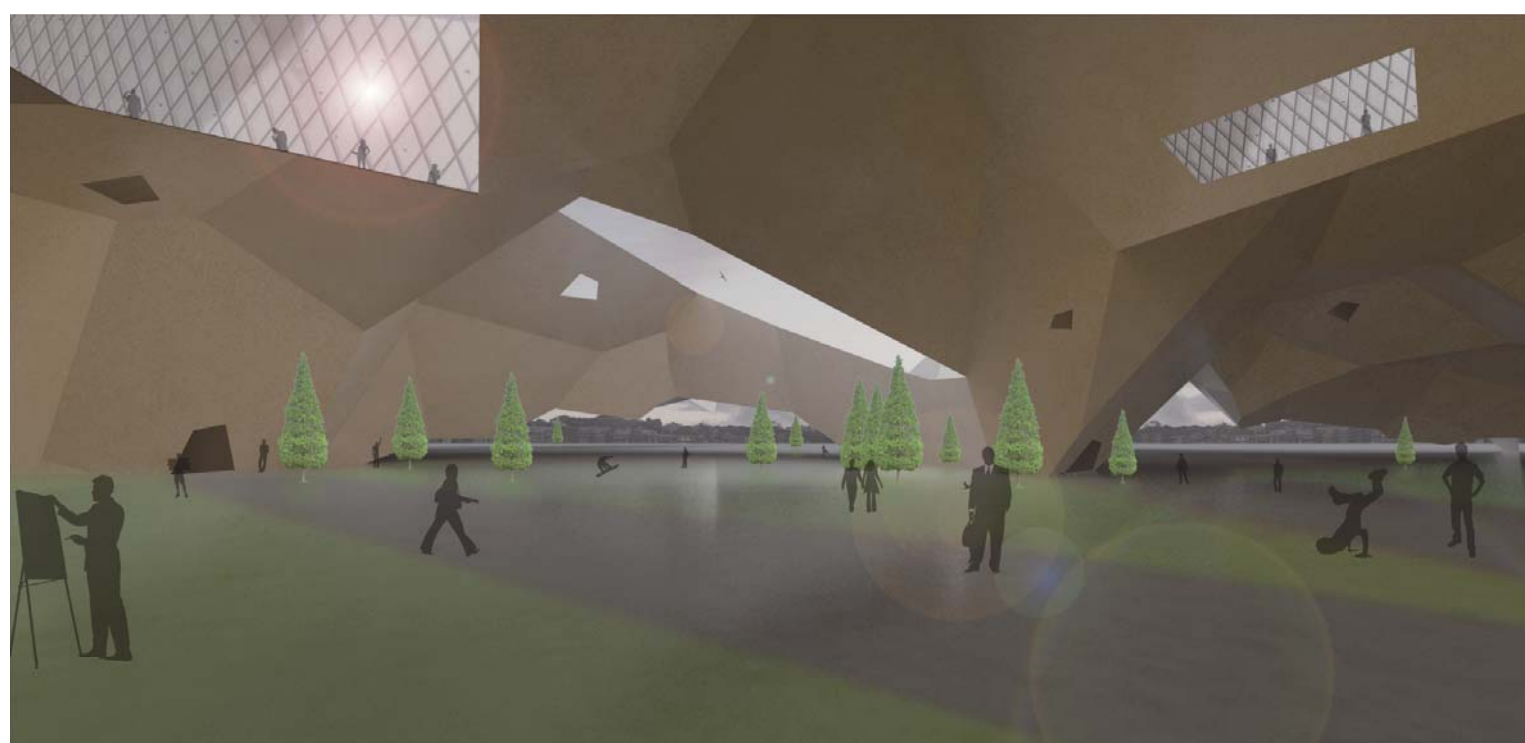
- Bedroom
- Bathroom
- Living Space
- Storage Space
- Park

**HABITATION & HOTEL UNIT**



Habitation Area  
Park Area

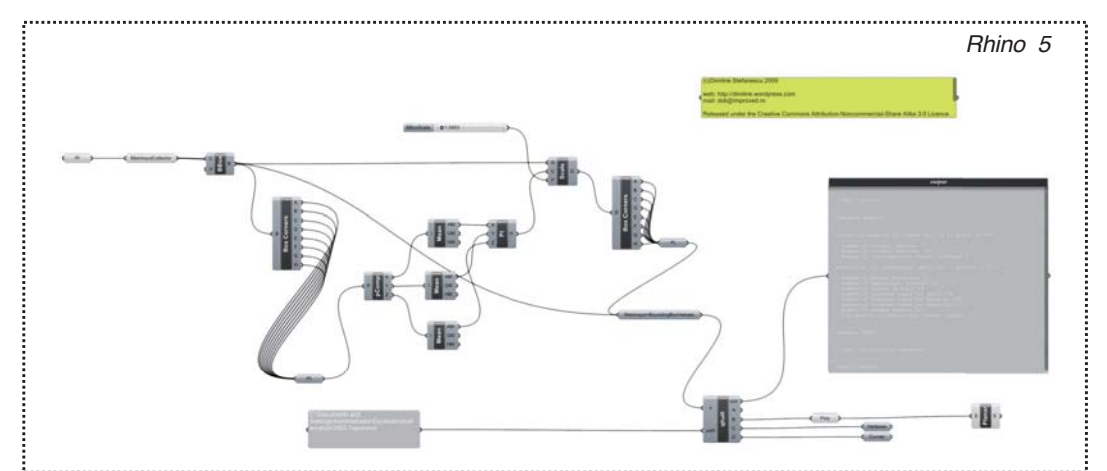
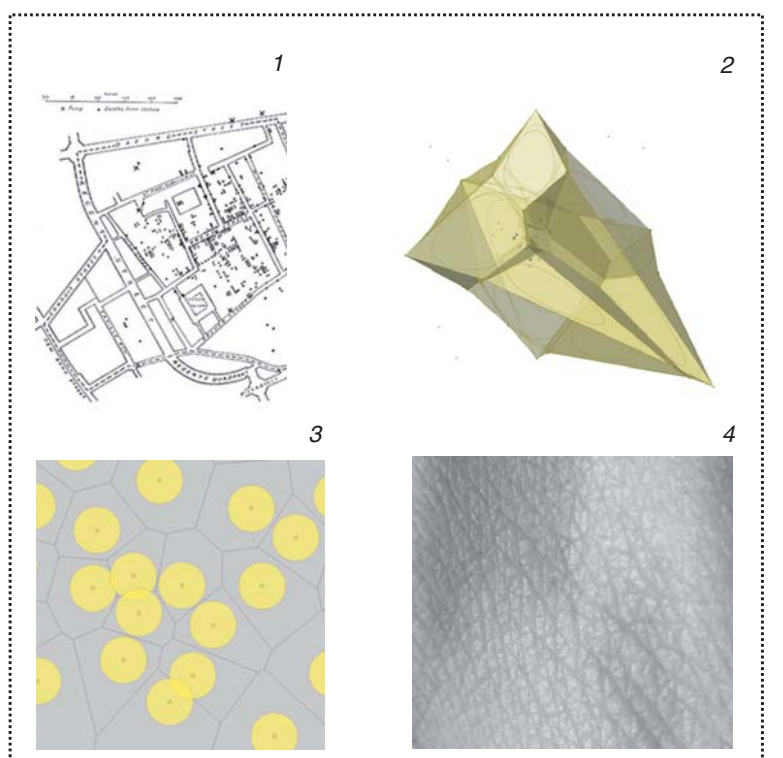
**GROUND FLOOR VIEW**



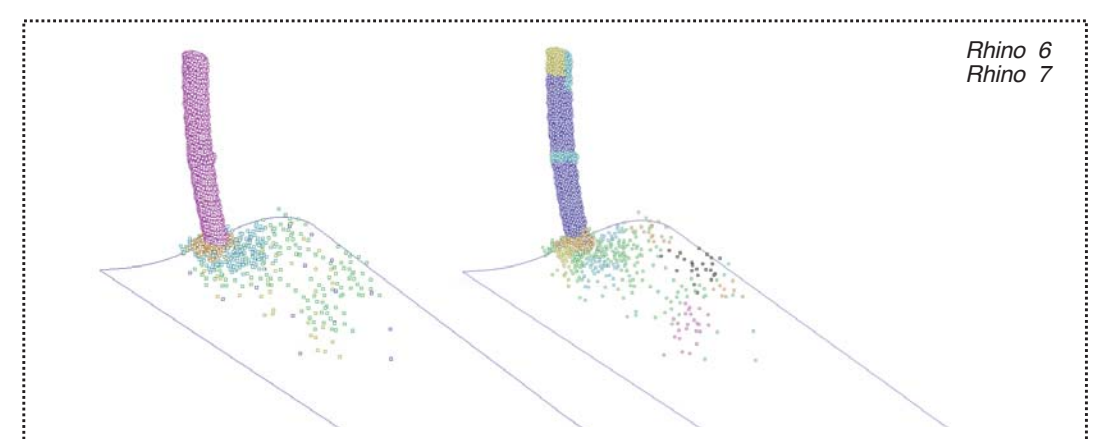
**CONNECTIONS VORONOI DIAGRAM**

Considering of applying all of the uses inside the area we found four major points of interest around the area that either connect or effect the uses - the road on the north which we planned as a major road connecting the area to the wider surroundings, the road on the west which we planned as a minor road between our site and the new part of Las Arenas which will probably be designed in the future, the river on the south and a park we planned on the east as the positive impacts on the site.

We divided the uses regarding the connection they need (more or less the question of direct connection to the road) and the position they need (more or less if the position has to be on the ground). As the site plan is completely empty and as there is no typology directly affecting our new typology and in the end because the design for our tower can be pretty much everything we started to use points for the uses rather than pre-designed areas.



Rhino 5



Rhino 6  
Rhino 7